

EXTENT OF GLACIAL LAKE SEDIMENTS OVER INWOOD, NEW YORK CITY, NY

Cheryl J. Moss, Mueser Rutledge Consulting Engineers, 14 Penn Plaza, New York, NY 10122 (cmoss@mrce.com)

Introduction

Modern surficial geologic maps (Stone & Others 2002; Stanford 2010a, 2010b) place 2 former glacial lakes – Lakes Bayonne and Hudson - over the New York City area (Figure 1), but as mapped these lakes do not account for the very deep and extensive glacial lake deposits present over parts of northern Manhattan, particularly over the neighborhoods of Harlem (Moss 2019) and Inwood (Figure 3).

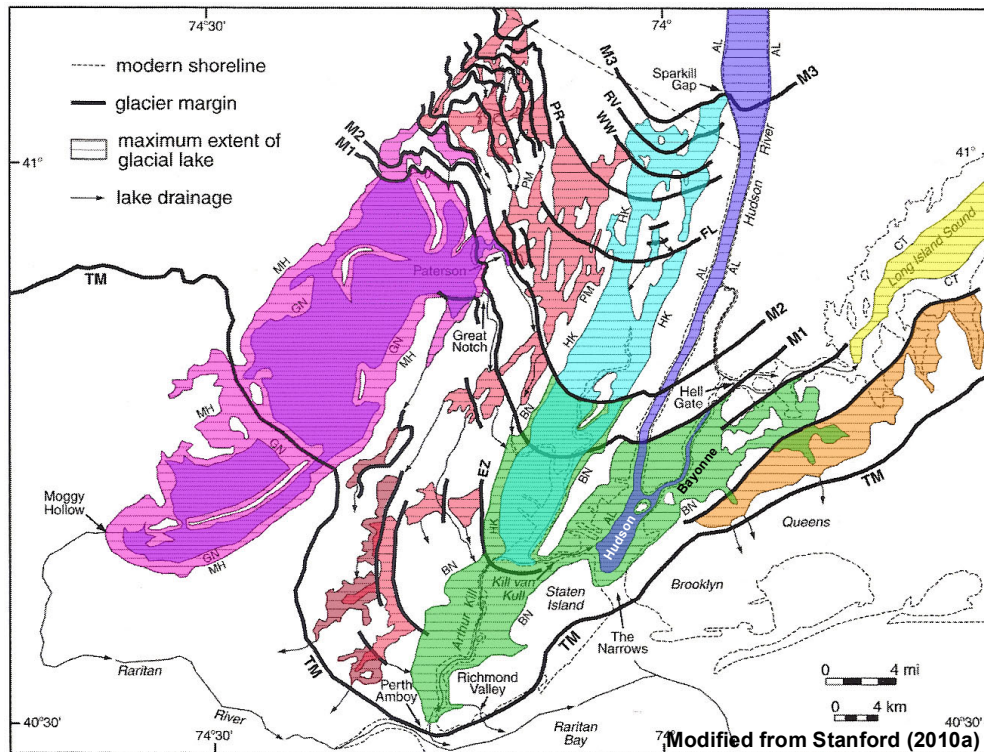


Figure 1 – Glacial lakes and ice margins mapped over New York City and New Jersey (Modified from Stanford 2010a). Modern surficial geologic maps only show glacial lakes Bayonne (colored green) and Hudson (colored blue) over New York City.

A couple of older maps show glacial lakes Flushing and Hudson over the city, but their ability to pinpoint the extent of the lake sediments is a bit vague. The map by Reeds (1927) uses a known association with glacial sands to deduce the locations of glacial lakes over the region rather than mapping all the lake deposits directly, and it is at a small scale that makes it difficult to find specific sites. Parsons (1973, 1976) uses the assumption that areas that don't have outcrops of rock or till generally have glacial lake deposits (Figure 2). This assumption is roughly correct but not precise.

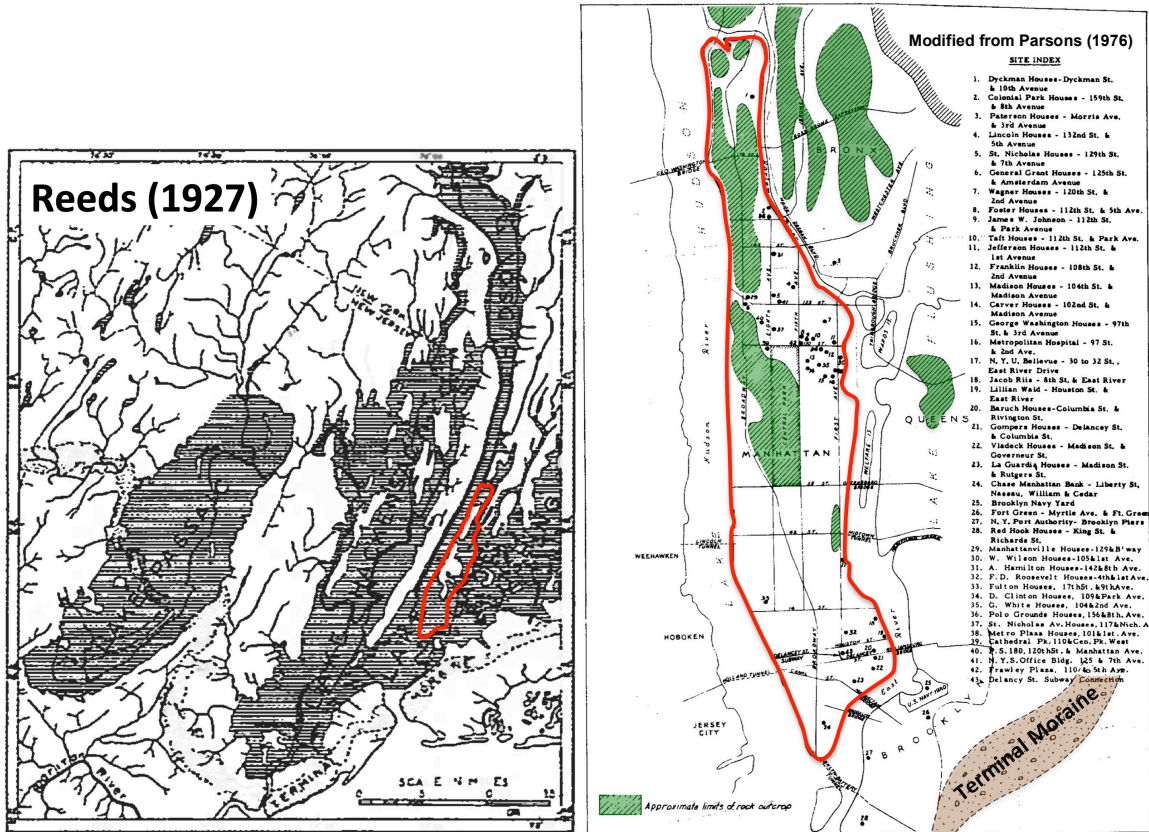


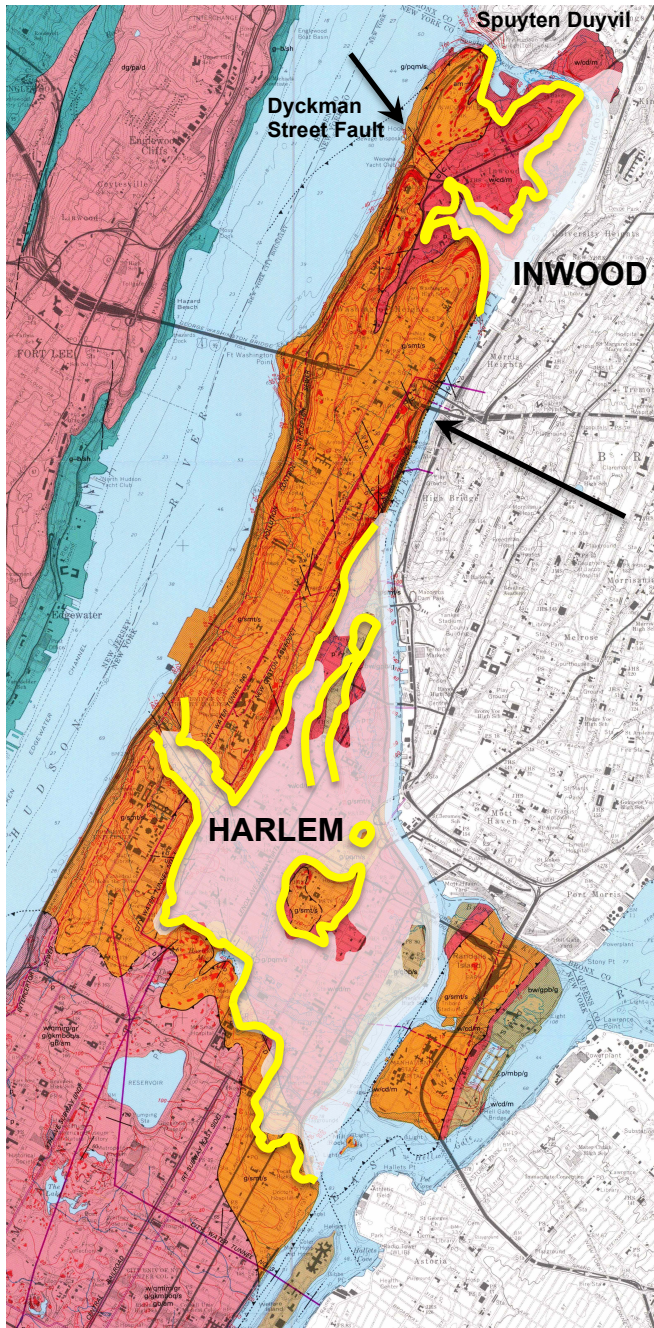
Figure 2 – Older maps show glacial lakes Flushing and Hudson over New York City, but they’re not the most precise for locating sites with glacial lake sediments. Reeds (1927) maps glacial lakes (in gray) at a very small scale. Parsons (1976) assumes areas without rock outcrops often have glacial lake sediments. (Rock outcrops colored green.) (Modified from Reeds 1927 and Parsons 1976.)

New Mapping

MRCE has an extensive archive of subsurface geotechnical information, particularly over New York City. Moss (2019) used this database to map more precisely the extent of the glacial lake deposits over Harlem. As a continuation, this paper extends the mapping over the Inwood neighborhood at the northeast tip of Manhattan (Figure 3). The procedure and base map used here for the Inwood lake are the same as used for mapping the Harlem lake.

Information such as top of bedrock elevation and strata breaks in boring logs was compiled from multiple sources including Rock Data Maps (WPA 1937), published geologic maps (Baskerville 1994; Stumm & Others 2015), and dozens of geotechnical investigations in the MRCE database. The USGS engineering geologic map sheet (Baskerville 1994), which has top of rock contour lines, was chosen to be the base map for the current glacial lake mapping. This map uses NGVD 29 as its vertical datum, so all of the data elevations were converted to NGVD 29. When published coordinates were not available, maps and plans with boring locations

were overlain on Google Earth to obtain the coordinates of the borings. This allowed the glacial lake data to be placed more accurately on the geologic base map.



A possible connection between Inwood and Lake Hudson was most likely through Spuyten Duyvil Creek

The bedrock at the western end of the Dyckman Street fault may have been too high to allow Lake Hudson to connect to Inwood

Similar lake levels and stratigraphy indicate that it is likely there was an eventual connection between the Inwood and Harlem lakes through the Harlem River channel

Figure 3 – Mapped extent of glacial lakes over Harlem and Inwood. Base map is the NYC geologic map - engineering sheet (Baskerville 1994), which has top of rock contour lines. Elevation 0' contours over Harlem and Inwood are highlighted in yellow. The extent of glacial lake sediments is colored white. In both the Inwood and Harlem neighborhoods glacial lake deposits are generally found where the top of rock and any overlying till is below elevation 0'. Boring information down the center of the Harlem River channel is limited, so it is not yet clear what the bedrock/till elevation is between the Harlem and Inwood lakes, but similarities between the 2 lakes suggests the 2 were eventually connected.

New York City Glacial Lakes

Recent surficial geologic maps of the region provide detailed mapping of the glacial lakes over New Jersey, but show only Glacial Lakes Bayonne and Hudson over New York City (Figure 5). Lake Bayonne formed as glacial ice started to retreat north of the terminal moraine. When an outlet to Long Island Sound opened up at Hell Gate in the East River, Lake Bayonne dropped down to the Lake Hudson level. The Hell Gate outlet initially flowed over till, but eventually cut down through it to stabilize approximately 20' lower on bedrock (Stanford email communication 2019). This was Lake Hudson's primary outlet until the terminal moraine was breached at the Narrows and Lake Hudson/Albany started to drain, eventually reestablishing Hudson River flow directly to the Atlantic Ocean.

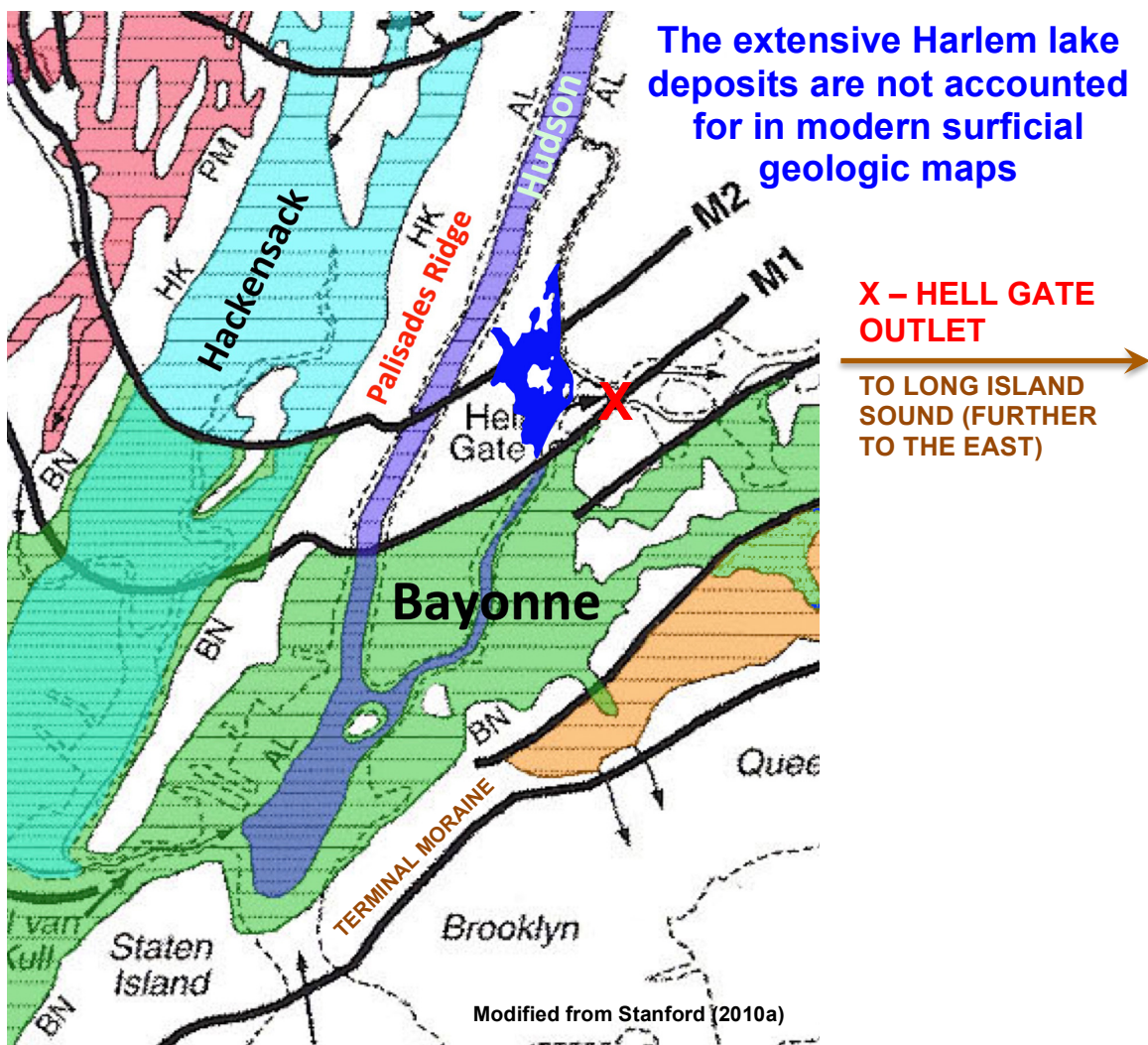


Figure 5 – Glacial lakes mapped over New York City (Modified from Stanford 2010a). Lake Bayonne (colored green) formed when the ice retreated north of the terminal moraine. When an outlet to Long Island Sound opened up at Hell Gate, Lake Bayonne dropped down to the Lake Hudson (colored blue) level. This map does not account for the deep and extensive glacial lake deposits present over Harlem (shown in dark blue) (Moss 2019).

As mapped, Lakes Bayonne and Hudson explain the presence of glacial lake sediments across lower Manhattan and portions of western Brooklyn and Queens. Unfortunately, they cannot account at all for the very deep and extensive lake deposits that are present across other large portions of NYC, including the ones found over Harlem (Moss 2019) or the Inwood section of northern Manhattan (Figures 3 & 7).

Inwood Lake Extent

In the Inwood section of Manhattan the location of glacial lake sediments is determined largely by the bedrock topography. The Harlem River follows a bedrock valley that for most of its length cuts into a layer of the Inwood Marble (Figures 3 & 7). A large NW trending fault runs along Dyckman Street at the southern end of the neighborhood. The northern end of the Harlem River was largely confined with limited outlets prior to construction of the Harlem Ship Canal in 1895. In this basin continuous lake deposits are generally found where the bedrock and any overlying till is below elevation 0'. This is the same pattern that is seen to the south at the Harlem lake. The Inwood lake extended from the northern end of the Harlem River southward down the river valley to the Dyckman Street fault zone where the lake turned westward into the fault valley. There are scattered locations above El. 0' that have some fine grained sediments, but these appear to be either filling small depressions or may be some of the presumed eolian soil mapped in the neighborhood (Merrill 1902) (Figure 6).

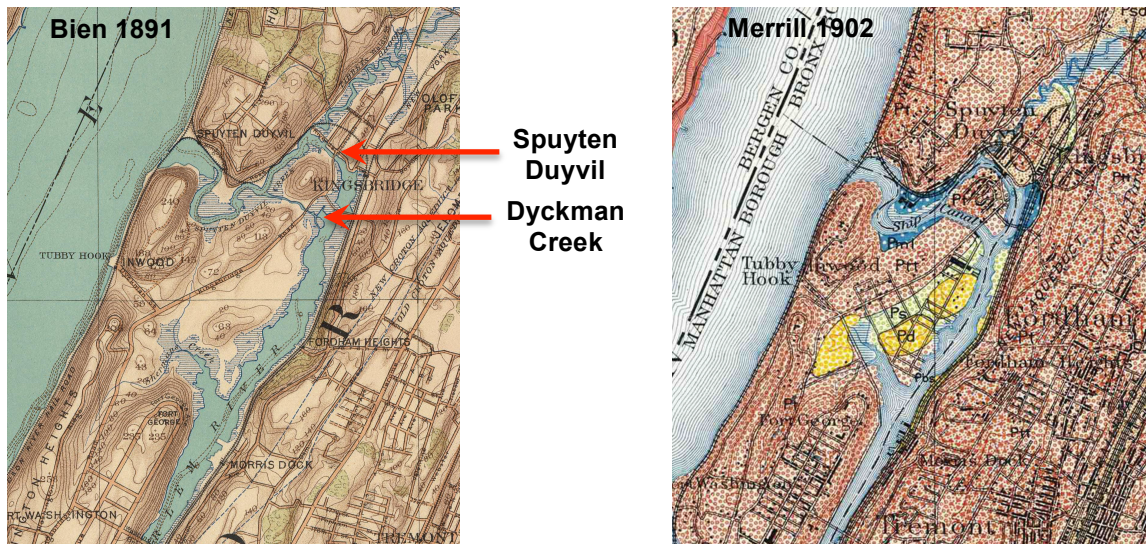


Figure 6 – Historic topographic map (Bien 1891) showing limited drainage at the Inwood basin before the Harlem Ship Canal (left) was constructed along Dyckman Creek, and surficial geologic map showing drainage shortly after (right). The geologic map (Merrill 1902) also shows the location of presumed eolian sand (pd – in yellow) that could account for fine grained sand found at elevations above 0'. Rock is so shallow along Spuyten Duyvil Creek around Kingsbridge that only rowboats could pass from the Hudson through to the Harlem River. Rock at the western end of Dyckman Street may have been too high to allow any significant connection between the Harlem and Hudson rivers through the fault zone.

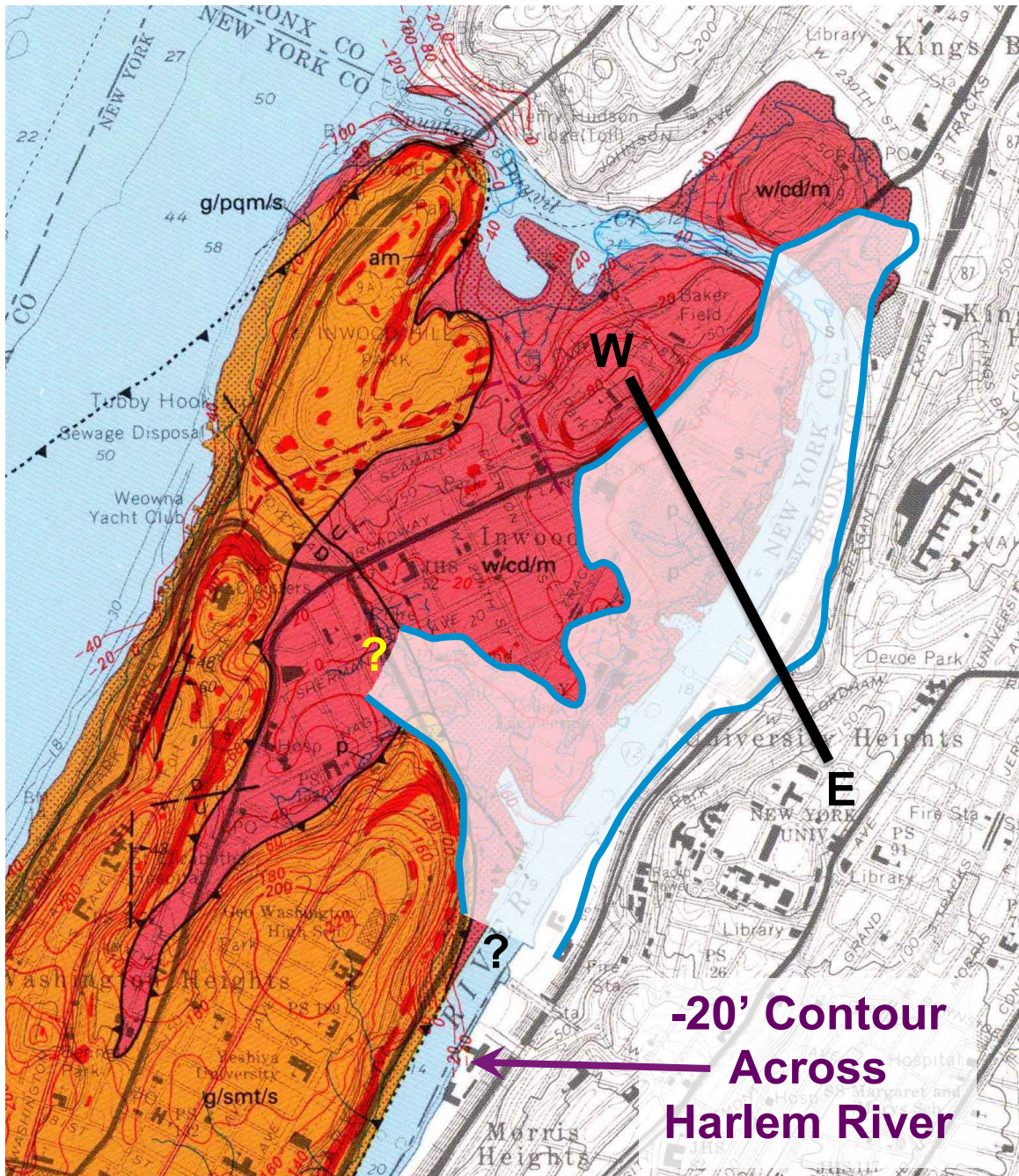


Figure 7 – Extent of glacial lake over Inwood shown in white with blue outline. The black line W-E shows the alignment of the general stratigraphic cross-section shown in Figure 8. Lake sediments are generally present where the original bedrock surface and any overlying till is below elevation 0'. (Red lines are top of rock contours.) The Inwood basin was initially isolated with limited outlets. A connection to Lake Hudson through Spuyten Duyvil Creek may not have been deeper than elevation -20', and around elevation 0' through the Dyckman Street fault zone. If the -20' rock contour crossing the Harlem River around 190th Street is accurate, then any connection to the Harlem lake to the south may have also been around elevation -20'. It is not clear if the lake extended beyond the question marks shown in the Dyckman Street fault and Harlem River channel.

Inwood Lake Stratigraphy

In the Inwood basin the bedrock is generally covered with a layer of glacial till (Figure 8). Varved silt and clay is present above the till. It is often more clayey at the base, becoming more silty as you move upwards through the stratum. The varved silt and clay continues to grade upward into varved fine sand and silt. This is often covered with a layer of fine to silty fine sand. The modern Harlem River cuts through the basin, so in places the glacial lake sediments were eroded out and overlain by river sand and estuarine organic silty clay and peat.

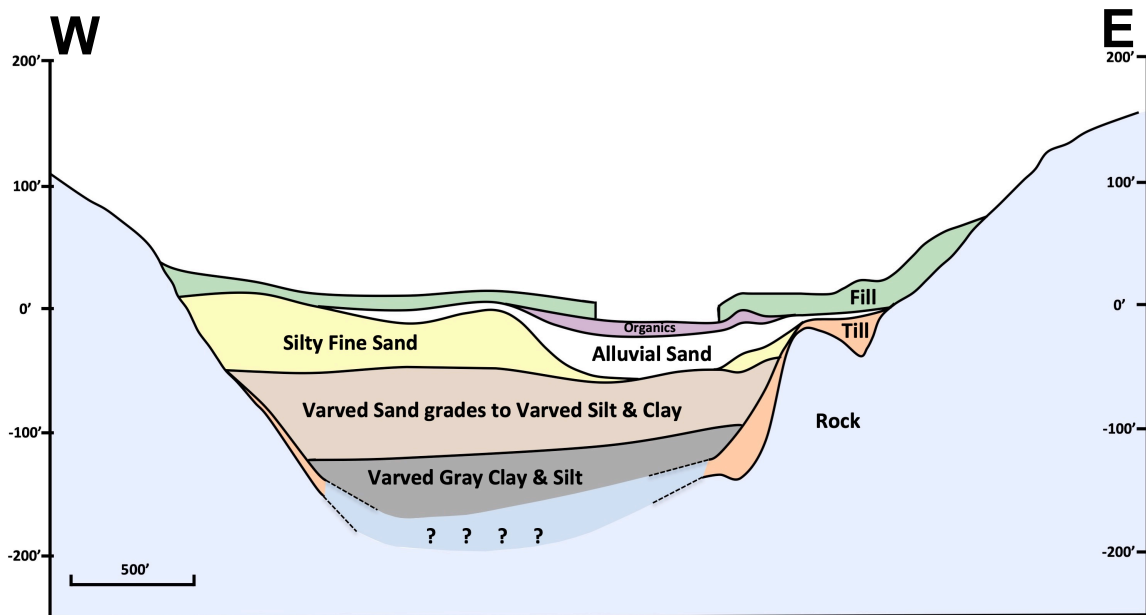


Figure 8 – Generalized West-East stratigraphic cross-section across the Inwood basin. The stratigraphic sequence seen in the Inwood lake is basically the same as what is present in the larger and more varied Harlem lake (Figure 9) at the southern end of the Harlem River. The strata from bottom to top are bedrock/till/varved silt and clay that grades upward to varved sand with silt/fine to silty fine sand/alluvial sand/estuarine organic soils/Fill. What is unique about the Inwood basin is that the varved clay and silt just above the till is often exclusively gray, especially in the deeper parts of the basin. When the color switches to the more typical brown with gray and red brown varves, it occurs over a short distance indicating a rapid shift from a local sediment source to a regional source.

This stratigraphic sequence is mostly the same as the generalized stratigraphy seen in the otherwise larger and more varied Harlem lake (Figure 9). The Inwood basin, however, does have a distinctive feature that differentiates it from other glacial lakes over NYC. The varved soil is often gray and clay rich immediately above the till, especially in areas where the basin is below elevation -50'. (It is not yet clear if El. -50' is significant or if this is just a coincidence.) Where it is present in shallower zones near the edges, the gray soil is a thin coating, while it is a thicker layer in the deep basin. Moving upward the soil color changes to brown, with some gray and red brown varves, which is the color mix more commonly seen in other glacial lake deposits across the city. The transition from gray to brown is fairly sharp, marking a

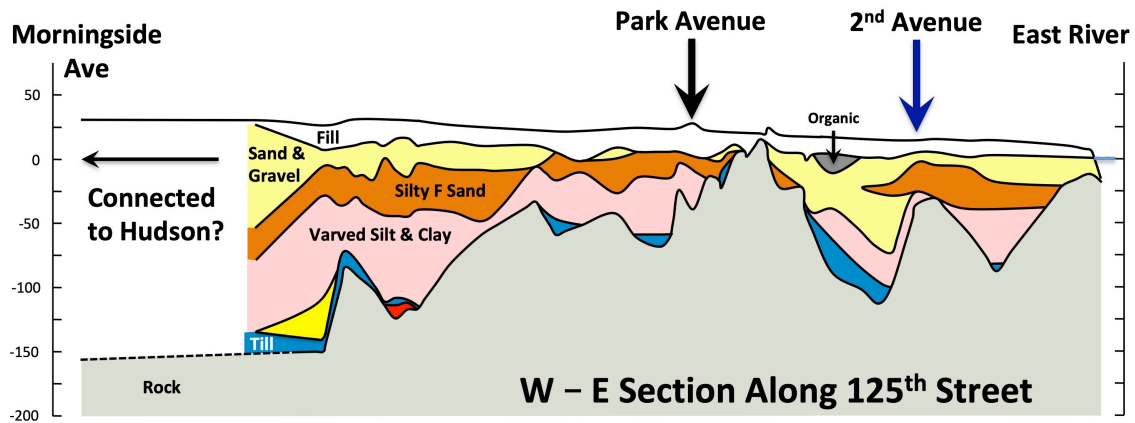


Figure 9 – West-East stratigraphic cross-section across Harlem lake along 125th Street (Moss 2019). The stratigraphic sequence seen in the Inwood lake (Figure 8) is basically the same as what is present in this larger and more varied Harlem lake at the southern end of the Harlem River. The general strata in Harlem, from bottom to top, are bedrock/till/varved silt and clay/fine to silty fine sand/outwash +/- alluvial sand/estuarine organic soils/Fill.

rapid shift from a local bedrock sediment source to a more regional one. This suggests the Inwood basin was isolated until the lake level rose high enough to connect with the otherwise similar Harlem lake to the south via the Harlem River +/- Lake Hudson just to the west (most likely through Spuyten Duyvil).

Conclusions

At the eastern end of Spuyten Duyvil Creek where it meets the Harlem River, the bedrock channel is quite narrow and shallow (Figure 6). The same appears to be true for what was originally Dyckman Creek. For this reason the Harlem Ship Canal was cut through the bedrock along Dyckman Creek to make the Harlem River more navigable. Until its' opening in 1895, only rowboats were able to pass through Spuyten Duyvil to the Harlem River (Engineering News 1895). Information about the original bedrock elevation prior to construction of the Ship Canal is limited, but the connection between the Inwood basin and Spuyten Duyvil may not have been much deeper than elevation -20', and it was possibly more shallow.

Stanford (2010a) places the Lake Hudson shoreline at Spuyten Duyvil at approximately elevation -10' (Figure 10), though it initially may have been up to roughly 20' higher before the till at the Hell Gate outlet eroded down to the bedrock (Stanford email communication 2019). If this is the case, then a connection between Inwood and Lake Hudson is definitely possible. Bedrock at the very western end of the Dyckman Street fault zone may reach up to just above elevation 0', so any connection between the Inwood basin and Lake Hudson through the fault zone is probably less significant than one through Spuyten Duyvil.

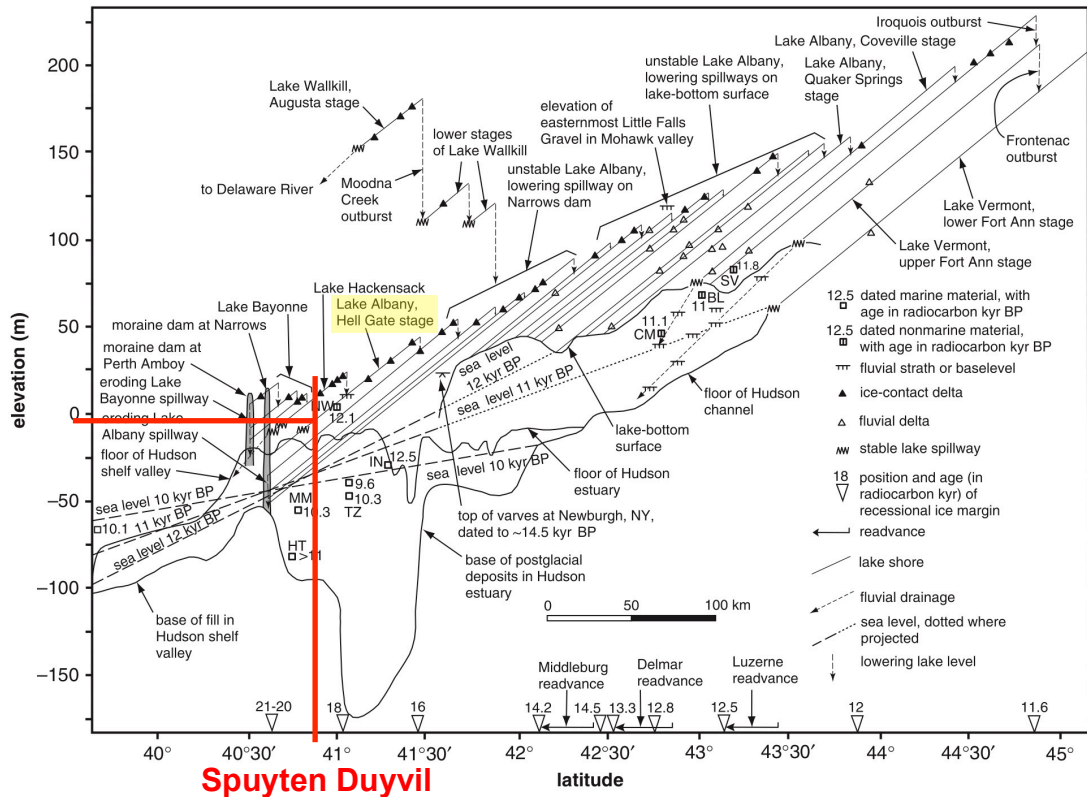


Figure 10 – Projected elevation of Lake Hudson/Albany shoreline at Spuyten Duyvil (Stanford 2010a). The lake level stabilized at approximately elevation -10' (note the scale is shown in meters) and it initially may have been around 20' higher before till at the Hell Gate outlet was eroded down through to bedrock.

The Harlem River valley between the Inwood and Harlem lakes consists of a narrow valley between steep rock walls (Figures 3 & 7). Information about the bedrock elevation down the center of this channel is also limited. The top of rock contour lines on the engineering geologic maps don't really show bedrock elevations under this stretch of the Harlem River. Only one location near West 190th Street has contour lines that cross the river, placing rock at elevation -20'. If this contour is accurate then the Harlem and Inwood lakes were almost certainly connected at some point. The fact that the two lakes are generally similar – present where rock/till is below elevation 0' with roughly the same stratigraphy – indicates that an eventual connection between the two basins was likely. More research is needed to determine to what extent, if any, these lakes were directly connected to Lakes Bayonne and Hudson.

Acknowledgements

I would like to thank Walter Kaeck for his very helpful review and comments. I would like to thank the partners at MRCE for allowing me to use information in the archives and for encouraging this research.

References

Baskerville, C.A., 1992, Bedrock and engineering geologic maps of Bronx County and parts of New York and Queens Counties, New York: U.S. Geological Survey, Miscellaneous Investigations Series Map I-2003, scale 1:24000.

Baskerville, C.A., 1994, Bedrock and engineering geologic maps of New York County and parts of Kings and Queens Counties, New York, and parts of Bergen and Hudson Counties, New Jersey: U.S. Geological Survey, Miscellaneous Investigations Series Map I-2306, scale 1:24000.

Bien, Joseph R., 1891, Atlas of the Metropolitan District and adjacent country comprising the counties of New York, Kings, Richmond, Westchester and part of Queens in the state of New York, the county of Hudson and parts of the counties of Bergen, Passaic, Essex and Union in the state of New Jersey, Julius Bien & Co., New York

Engineering News, June 20, 1895, Vol. 33, No. 25, pg. 399-401

Merguerian, Charles, 1994a, Stratigraphy, structural geology, and ductile- and brittle faults of the New York City area, p. 49-56 in Hanson, G. N., *chm.*, Geology of Long Island and metropolitan New York, 23 April 1994, State University of New York at Stony Brook, NY, Long Island Geologists Program with Abstracts, 165 p.

Merguerian, Charles, 1996, Stratigraphy, structural geology, and ductile- and brittle faults of New York City, p. 53-77 in Benimoff, A. I. and Ohan A. A., *chm.*, The Geology of New York City and Vicinity, Field guide and Proceedings, NY State Geological Association, 68th Annual Meeting, Staten Island, NY, 178 p.

Merrill, F. J. H.; Darton, N. H.; Hollick, Arthur; Salisbury, R. D.; Dodge, R. E.; Willis, Bailey; and Pressey, H. A., 1902, Description of the New York City district: United States Geological Survey Geologic Atlas of the United States, New York City Folio, No. 83, 19 p.

Moss, Cheryl J., 2009, Boulder till filled plunge pools found at the World Trade Center site, NYC, NY, Geological Society of America Abstracts with Programs, v. 41, no. 3, p. 35. GSA-Northeastern Section - 44th Annual Meeting in Portland, ME (22-24 March 2009)

Moss, Cheryl J., 2010a, Engineering implications of newly mapped Walloomsac Formation in lower Manhattan and New York Harbor, Geological Society of America Abstracts with Programs, v. 42, no. 1, p. 169. GSA-Northeastern Section (45th Annual) and Southeastern Section (59th Annual) Joint Meeting in Baltimore, MD (13-16 March 2010)

Moss, Cheryl J., 2010b, Newly mapped Walloomsac Formation in lower Manhattan and New York Harbor and the implications for engineers: in Hanson, G. N., *Chm.*, 17th Annual Conference on Geology of Long Island and Metropolitan New York, 10 April 2010, State University of New York at Stony Brook, NY, Long Island Geologists Program with abstracts, 20 p.

Moss, Cheryl J., 2011a, Geotechnical Evidence of Multiple Glacial Advances in New York City's Subsurface, Geological Society of America Abstracts with Programs, v. 43, no. 1, p. 95.

Moss, Cheryl J., 2011b, Use of Engineering Properties to Identify Multiple Glacial Advances in New York City's Subsurface: in Hanson, G. N., *Chm.*, 18th Annual Conference on Geology of Long Island and Metropolitan New York, 9 April 2011, State University of New York at Stony Brook, NY, Long Island Geologists Program with abstracts, 13 p.

Moss, Cheryl J., 2012a, Evidence of two Wisconsin age glacial advances in a valley beneath the new Yankee Stadium, Bronx, New York, Geological Society of America Abstracts with Programs, v. 44, no. 2, p. 71. GSA-Northeastern Section - 47th Annual Meeting in Hartford, CT (18-20 March 2012)

Moss, Cheryl J., 2012b, Evidence of Two Wisconsin Age Glacial Advances in a Bedrock Valley Below the New Yankee Stadium, Bronx, New York: in Hanson, G. N., Chm., 19th Annual Conference on Geology of Long Island and Metropolitan New York, 14 April 2012, State University of New York at Stony Brook, NY, Long Island Geologists Program with abstracts, 13 p.

Moss, Cheryl J., 2013a, Evidence from the Citifield Stadium site, Queens, New York City, NY of glacial readvances during recession from the Last Glacial Maximum, Geological Society of America Abstracts with Programs, v. 45, no. 1, p. 106. GSA-Northeastern Section - 48th Annual Meeting in Bretton Woods, NH (18–20 March 2013)

Moss, Cheryl J., 2013b, Evidence of glacial readvances during recession from the Last Glacial Maximum from the Citifield Stadium site, Queens, New York City, NY: in Hanson, G. N., Chm., 20th Annual Conference on Geology of Long Island and Metropolitan New York, 13 April 2013, State University of New York at Stony Brook, NY, Long Island Geologists Program with abstracts, 11 p.

Moss, Cheryl J., 2014a, Steady then stagnant – Aspects of LGM deglaciation in Flushing Meadows, Queens, New York, Geological Society of America Abstracts with Programs, v. 46, no. 2, p. 45. GSA-Northeastern Section - 49th Annual Meeting in Lancaster, PA (23–25 March 2014)

Moss, Cheryl J., 2014b, Aspects of LGM deglaciation in Flushing Meadows, Queens, New York City, NY: in Hanson, G. N., Chm., 21th Annual Conference on Geology of Long Island and Metropolitan New York, 12 April 2014, State University of New York at Stony Brook, NY, Long Island Geologists Program with abstracts, 13 p.

Moss, Cheryl J., 2016a, Stratigraphy Across the Hudson River as Revealed in Borings for the New NY Bridge Replacing the Tappan Zee, Tarrytown – Nyack, Geological Society of America Abstracts with Programs, v. 48, no. 2. GSA-Northeastern Section – 51st Annual Meeting in Albany, NY (21–23 March 2016)

Moss, Cheryl J., 2016b, Stratigraphy Across the Hudson River, Tarrytown – Nyack, NY Updated From Borings for the New NY Bridge Replacing the Tappan Zee: in Hanson, G. N., Chm., 23th Annual Conference on Geology of Long Island and Metropolitan New York, 16 April 2016, State University of New York at Stony Brook, NY, Long Island Geologists Program with abstracts, 13 p.

Moss, Cheryl J., 2018a, Stratigraphic Record of Glacial Readvances Along the Hudson River at Manhattanville, New York City, NY, Geological Society of America Abstracts with Programs, v. 50, no. 2. GSA-Northeastern Section – 53rd Annual Meeting in Burlington, VT (18–20 March 2018)

Moss, Cheryl J., 2018b, Interpreting the Stratigraphic Record of Glacial Readvances Along the Hudson River at Manhattanville, New York City, NY: in Hanson, G. N., Chm., 25th Annual Conference on Geology of Long Island and Metropolitan New York, 14 April 2018, State University of New York at Stony Brook, NY, Long Island Geologists Program with abstracts, 13 p.

Moss, Cheryl J., 2019a, “Re-Mapping” Harlem’s Glacial Lake in Northern New York City, NY, Geological Society of America Abstracts with Programs, v. 51, no. 1. GSA-Northeastern Section – 54th Annual Meeting in Portland, ME (17–19 March 2019)

Moss, Cheryl J., 2019b, “Re-Mapping” Harlem’s Glacial Lake, New York City, NY: in Hanson, G. N., Chm., 26th Annual Conference on Geology of Long Island and Metropolitan New York, 13 April 2019, State University of New York at Stony Brook, NY, Long Island Geologists Program with abstracts, 13 p.

Moss, Cheryl J., 2020a, Mapped Extent of Glacial Lake Sediments Over Inwood, New York City, NY, Geological Society of America Abstracts with Programs, v. 52, no. 2. GSA- Joint Southeastern-Northeastern Sections – 55th Annual Meeting in Reston, VA (20–22 March 2019)

Moss, Cheryl J., and Merguerian, Charles, 2009, 50 Ka Till-Filled Pleistocene Plunge Pools and Potholes

Found Beneath the World Trade Center Site, New York, NY: in Hanson, G. N., chm., Sixteenth Annual Conference on Geology of Long Island and Metropolitan New York, 28 March 2009, State University of New York at Stony Brook, NY, Long Island Geologists Program with Abstracts, 19 p.

Nikolaou, Sissy, 2004, Local Geology of New York City and its Effect on Seismic Ground Motions, in Proceedings: Fifth International Conference on Case Histories in Geotechnical Engineering, New York, NY, April 13-17, 2004, 14 p.

Parsons, J. D., 1973, Settlements of structures on preconsolidated cohesive soils – Case Histories – Metropolitan New York Area: in Seminar - Settlement of Structures, Part II, April 30, 1973, ASCE Metropolitan Section, 56 p.

Parsons, J. D., 1976, New York's glacial lake formation of varved silt and clay: Proceedings of the American Society of Civil Engineers, Journal of Geotechnical Engineering Division, vol. 102, no. GT6, p. 605-638.

Reeds, C. A., 1926, The varved clays at Little Ferry, New Jersey, American Museum Novitates, No. 209, p. 1-16.

Reeds, C. A., 1927, Glacial Lakes and clays near New York City, Natural History, Vol. 27, p. 54-64.

Sanders, John E.; and Merguerian, Charles, 1994, Glacial geology of the New York City region, p. 93-200 in Benimoff, A. I., ed., The geology of Staten Island, New York: Geological Association of New Jersey Annual Meeting, 11th, Somerset, NJ, 14-15 October 1994, Field guide and proceedings, 296 p.

Sanders, John E.; and Merguerian, Charles, 1998, Classification of Pleistocene deposits, New York City and vicinity – Fuller (1914) revived and revised: p. 130-143 in Hanson, G. N., chm., Geology of Long Island and metropolitan New York, 18 April 1998, State University of New York at Stony Brook, NY, Long Island Geologists Program with Abstracts, 161 p.

Stanford, S. D., and Harper, D. P., 1991, Glacial lakes of the lower Passaic, Hackensack, and lower Hudson valleys, New Jersey and New York, Northeastern Geology, vol. 13, no. 4, p. 271-286.

Stanford, Scott D., 2010a, Onshore record of Hudson River drainage to the continental shelf from the late Miocene through the late Wisconsinan deglaciation, USA: synthesis and revision, Boreas, vol. 39, p 1–17.

Stanford, Scott D., 2010b, Glacial Geology and Geomorphology of the Passaic, Hackensack, and Lower Hudson Valleys, New Jersey and New York, p. 47-84 in Benimoff, A. I., ed., New York State Geological Association 82nd Annual Meeting Field Trip Guidebook, Staten Island, NY, 24-26 September 2010, 190 p.

Stone, B.D.; Stanford, S.D.; and Witte, R.W., 2002, Surficial geologic map of northern New Jersey: U.S. Geological Survey, Miscellaneous Investigations Series Map I-2540-C, scale 1:100000.

Stumm, F., Noll, M., Como, M., Chu, A., and Finkelstein, J., 2015, Bedrock Surface Elevation of the Five Boroughs of New York City, New York, U.S. Geological Survey, Scientific Investigations Map XXXX: in Geothermal Systems and Their Application in New York City, New York City Mayor's Office of Sustainability, 65 p.

Works Progress Administration, 1937, Rock Data Map of Manhattan Showing Locations of Borings, Excavations, Etc., Office of the President of the Borough of Manhattan of the City of New York.

Moss, Cheryl J., 2020b, Extent of Glacial Lake Sediments Over Inwood, New York City, NY: in Hanson, G. N., Chm., 27th Annual Conference on Geology of Long Island and Metropolitan New York, 18 April 2020, State University of New York at Stony Brook, NY, Long Island Geologists Program with abstracts, 13 p.